



PLATOWOOD[®]

THE ARCHITECT'S CHOICE



Platowood Pavilion, Arnhem (NL)
An innovative showcase for our company
Weeber architects
Façade cladding
Platowood Fraké



PLATOWOOD

The architect's choice

Platowood adds value to wood. Through a unique process using only heat and water, partly from residual flows, we preserve fast-growing types of wood that naturally have a short lifespan. The excellent, dimensionally stable, and aesthetic qualities that the wood takes on in this way, offer architects unlimited freedom of design. It can be applied indoors and outdoors in any climate. Wood by Platowood is fully recyclable and has a lifespan of at least 50 years, even without finishing work.

Design with impact

Platowood is a pioneer in modifying wood and constantly developing to make even more durable and innovative applications possible. By combining our knowledge, experience, and love for wood, we enable architects and other clients to create designs with a lasting impact. This is achieved at our factory in the Netherlands, situated at the sustainable Industrial Park Kleefse Waard in Arnhem. In keeping close to the core and in conjunction with others, we are committed to a cleaner world and permanent carbon dioxide storage.



Contents

2	Types of wood
4	Platowood Fraké
8	Platowood Spruce
12	Platowood Poplar
16	Platowood Frame wood
20	Natural Ageing
22	Fire retardance
24	Finishes
28	Platonising
36	Profiles

Cover:
W.I.N.D. House, Bergen (NL)
UN Studio
Façade cladding
Platowood Fraké

TYPES OF WOOD

Platowood has three types of wood: Platowood Fraké, Platowood Spruce and Platowood Poplar. We only use fast-growing wood species that comes from certified forests and thus contribute to the sustainable and responsible handling of this natural product. With a process of hydrothermal modification, patented by us as 'platonising', we extend the lifespan of wood to up to 50 years in outside conditions and without a finish. Possible applications for our wood products are: façade and roof cladding, interiors, garden & landscaping, infrastructure.

For all Platowood wood types there is an LCA available that provides transparency in the sustainability of our products.



PLATOWOOD SPRUCE p 8

Vibrant and natural look, sourced from certified North-European forests.

↑ Central building Plein 6, Noordwijk (NL)
IAA Architecten
Façade cladding
Platowood Spruce
Treated with fire retardant



PLATOWOOD FRAKÉ p 4

Sleek, stylish and an exotic look, sourced from certified West-African forests.

↑ Beach houses, Cadzand-Bad (NL)
MVSA Architects
Façade cladding, Frames, and Blinds
Platowood Fraké



PLATOWOOD POPLAR p 12

Warm and peaceful look, sourced from certified European forests.

↑ Monicahof Apartments, Utrecht (NL)
Studio Ramin Visch
Façade cladding
Platowood Poplar
Treated with fire retardant

PLATOWOOD FRAKÉ

Fraké is a fast-growing type of wood from West Africa, which, by nature, only has very limited durability. Our process transforms this wood into a useful and valuable material. Platonising accentuates the subtle flame-like grain pattern that distinguishes this wood. Platowood Fraké has a warm and stylish look, and the common pinstripes and pinholes give it a distinctive appearance.

Platowood Fraké is also most suitable for frames and doors (p 16) and patio areas.

Sustainability class: 1-2

“For me there's no other type of wood that has such a warm initial color and ages so beautifully and quickly. I love using raw planks of Platowood Fraké because of its natural look. Small thickness differences and slat imprints make the façade appealing.”

Architect Francois Verhoeven

Villa K340, The Hague (NL)
Francois Verhoeven Architecten
Façade cladding
Platowood Fraké rough

Community centre Xaverianen, Bruges (BE)
POLO Architects
Façade cladding and Columns
Platowood Fraké



Residence, Eelderwolde (NL)
Architectuurstudio SKA
Façade cladding, Frames, and Blinds
Platowood Fraké



PLATOWOOD SPRUCE

Platowood derives the coniferous Spruce wood from Scandinavia, where the wood, by nature, is already more robust than in Central Europe. By platonising spruce, it turns into an excellent and aesthetic wood product with very high dimensional stability. Typical of spruce are the knots and possible small resin pockets and grain patterns. It makes Platowood Spruce a vibrant wood product.

Sustainability class: 1

Fontys campus Rachelsmolen, Eindhoven (NL)

Façade cladding

Platowood Spruce

Treated with fire retardant





Het Kleine Krikhaar, Geesteren (NL)
Reitsemma en partners
Façade and roof cladding
Platowood Spruce
Weathered Color



Adventure house Scouting estate, Zeewolde (NL)
MOST Architecture + TOMDAVID Architecten
Façade cladding and Interior
Platowood Spruce



NIOO-KNAW, Wageningen
Claus en Kaan Architecten
Façade cladding and Interior
Platowood Spruce
Treated with fire retardant

PLATOWOOD POPLAR

The European Poplar grows close to our home base in the Netherlands. The even grain, light line patterns, and refined color hues are distinctive for Platowood Poplar. Our process gives the wood a warm, golden tint. The wood product feels soft, is lightweight, and has a peaceful look.

Sustainability class: 1

“We have consciously chosen Platowood because of its durable and circular character. Poplar has a warm color and an exceedingly nice and friendly look.”

Architect Rob Janssen Bouwmeester

Day-care centre Pinkeltje, Voorburg (NL)
Architect agency No Label
Façade cladding
Platowood Poplar



Villa, Okkenbroek (NL)
Reitsema en partners
Façade and roof cladding
Platowood Poplar



Stadsverf, Doesburg (NL)
Façade cladding
Platowood Poplar
Weathered Color



Monicahof Apartments, Utrecht (NL)
Studio Ramin Visch
Façade cladding
Platowood Poplar
Treated with fire retardant

PLATOWOOD FRAME WOOD

Our durable frames, windows and doors with aesthetic appeal are made of platonised Fraké. As a result of our process, Platowood Frame wood hardly shrinks and swells and is much more stable than other types of wood. Therefore, it leaves all the room for the design and is ideally suited for floor-to-ceiling frames, sliding doors, and doors. Without the risk of much after-care. Combined with Platowood Fraké Façade cladding, a uniform architectural image is created.

Ideal properties

We use finger joints and lamination to ensure an optimized product in easily processable lengths. This way we also prevent unnecessary wood waste. Platowood Framing wood has a long lifespan and can be applied without a finish*. Besides that, it hardly shows any shrinking and swelling behavior, it has a good insulating effect, it is burglar proof, and requires low maintenance. Our Framing wood is KOMO certified.

* Wood remains a natural product that reacts to natural changes. Due to moisture, small drying cracks and stains may appear. This does not affect the durability of the wood.

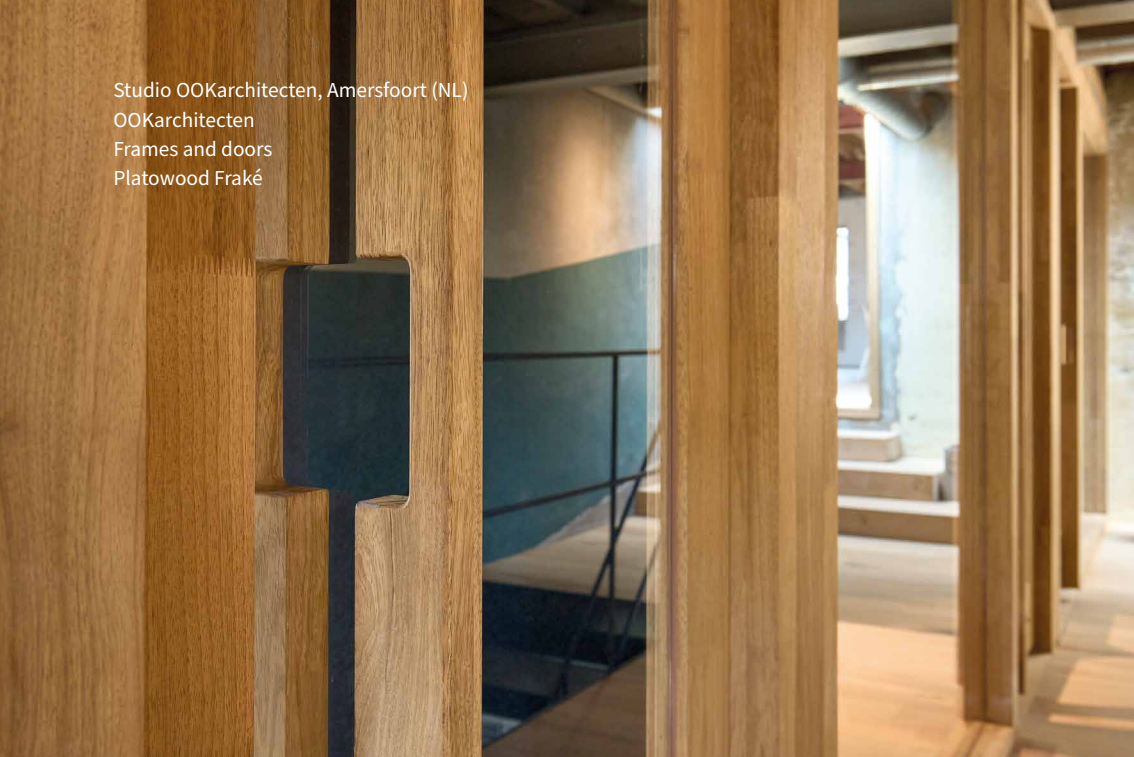


“I was looking for preserved wood that continues to look good without painting. Platowood is ideally suited to the strategy that we want to pursue in all projects: to use materials that are as crude and unprocessed as possible. I also think it's great that nowadays you can make almost everything with Platowood.”

Architect Rolf Reichardt

Villa Ventura, Sint-Oedenrode (NL)
RHAW architecture
Frames and Façade cladding
Platowood Fraké and Platowood Spruce

Studio OOKarchitecten, Amersfoort (NL)
OOKarchitecten
Frames and doors
Platowood Fraké



Landgoed Klingelbeek, Arnhem (NL)
Dyvik Khalen Architects
Frames
Platowood Fraké



Het Platform, Amersfoort (NL)
Space Encounters in collaboration with Schipper Bosch
Frames and Façade cladding
Platowood Fraké

NATURAL AGEING

By platonising the wood it has a lifespan of at least 50 years and can be used outdoors without applying a finish. It makes our wood low-maintenance and fully recyclable. Good for People and Planet. When exposed to the elements, the wood ages into a natural silver-grey tint, which is loved by many architects and users.

Preservation of durable qualities

Ageing occurs due to the influence of sunlight, weather and wind. The course of the ageing process is therefore unique for every project. The common factor is that the wood weathers, without losing its durable qualities. Architects and clients often underline the fact that they allow the wood to age, because it reemphasizes the natural appearance.



↓ Villa MG, Schiedam (NL)
STATS Architecten
Façade cladding
Platowood Fraké

↑ Revis Lyceum, Doorn (NL)
MoederscheimMoonen Architects
Façade cladding, Interior
Platowood Fraké
Treated with fire retardant



“It was the first time we used wood from Platowood. The client wanted to use untreated wood, so we decided on Platowood Fraké, a beautiful and durable alternative to hardwood. Platowood wood is dimensionally stable and ages beautifully. It's the best preserved wood to be found.”

Architect Ralph van de Donk

FIRE RETARDANCE

Fire safety requirements are becoming increasingly strict. With a local process and biological product, the wood of Platowood can be treated with fire retardant. With this treatment, the wood achieves Euro fire class B while maintaining its CE marking. That is how you know that your project complies with the highest possible fire classification for wood.

An environmentally-friendly treatment with 100% natural substances

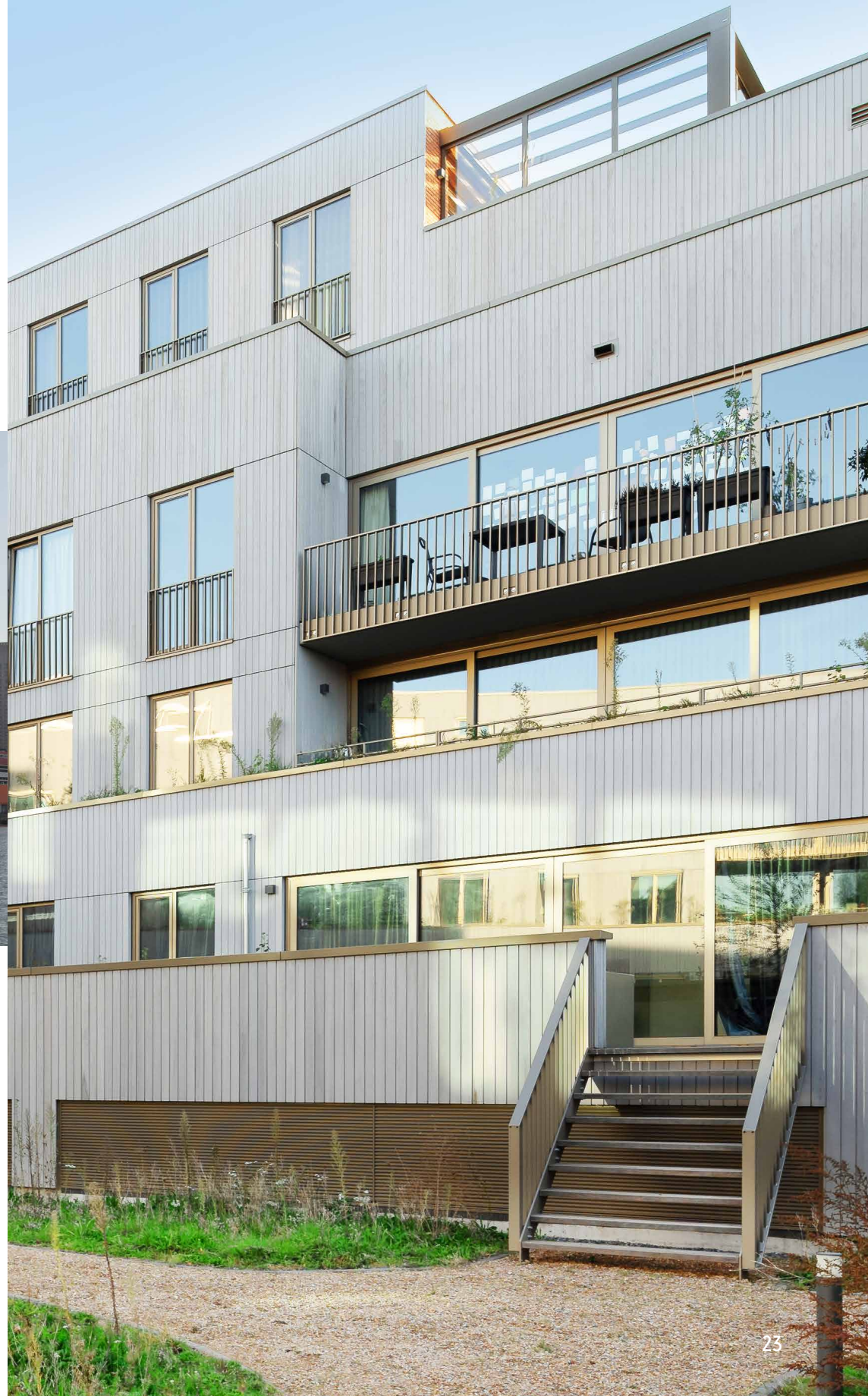
In an autoclave, the wood is impregnated with BurnBlock® powder. A proven product composed entirely of natural substances, and the first fire retardant that was included in the Cradle to Cradle Certified® product program. It does not leach out and once applied it does not require any after-treatment.

Our fire retardant treatment causes no harm to humans, animals, and nature, and it is fully biodegradable.

De Gebroeders, Eindhoven (NL)
diederendirix architectuur
Façade cladding
Platowood Poplar
Treated with fire retardant + Weathered Color



↑ Floating Office, Rotterdam (NL)
Powerhouse Company
Façade cladding
Platowood Spruce
Treated with fire retardant + Weathered Color Stain



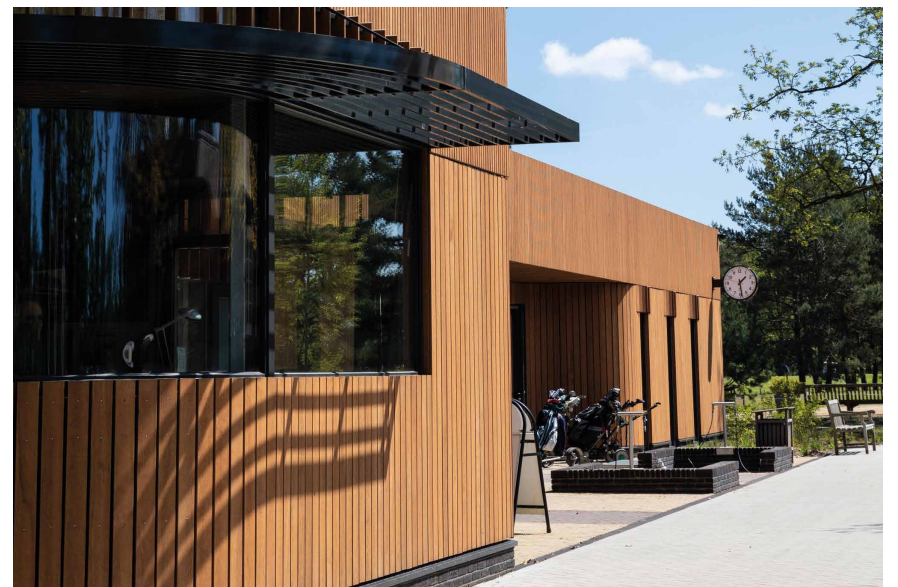
FINISHES



WEATHERED COLOR

A pre-ager that ensures a smooth transition in the ageing process. The Weathered Color gradually degrades while the wood ages naturally in the meantime. Available in a stain.

↑ German War Cemetery, Ysselsteyn (NL)
Novaedes Architecten
incl. Façade cladding, Frames, and Blinds
Platowood Fraké
Weathered Color



NATURAL COLOR

To retain the wood's warm color. Natural Color prevents the wood from ageing. Available in an oil and stain alternative.

↑ Hilversum Golf Club, Hilversum (NL)
Bastiaan Jongerius Architecten in collaboration with Rappange & Partners Architecten and Oomen Ontwerpt
Façade cladding, Interior, and Blinds
Platowood Fraké
Natural Color Oil



BURNED WOOD

A dark coloring with colorfastness. Burned Wood gives the wood a rigorous and bold look. Available in an oil.

↑ Villa, Noorden (NL)
Väösearchitect & lab ng
Façade cladding
Platowood Fraké
Burned Wood Oil

FINISHES



COLOR

An opaque coating system in all available RAL colors. Available in a stain.

↑ Villa, Domburg (NL)
ABCV Architectuur
Façade cladding
Platowood Fraké
Color

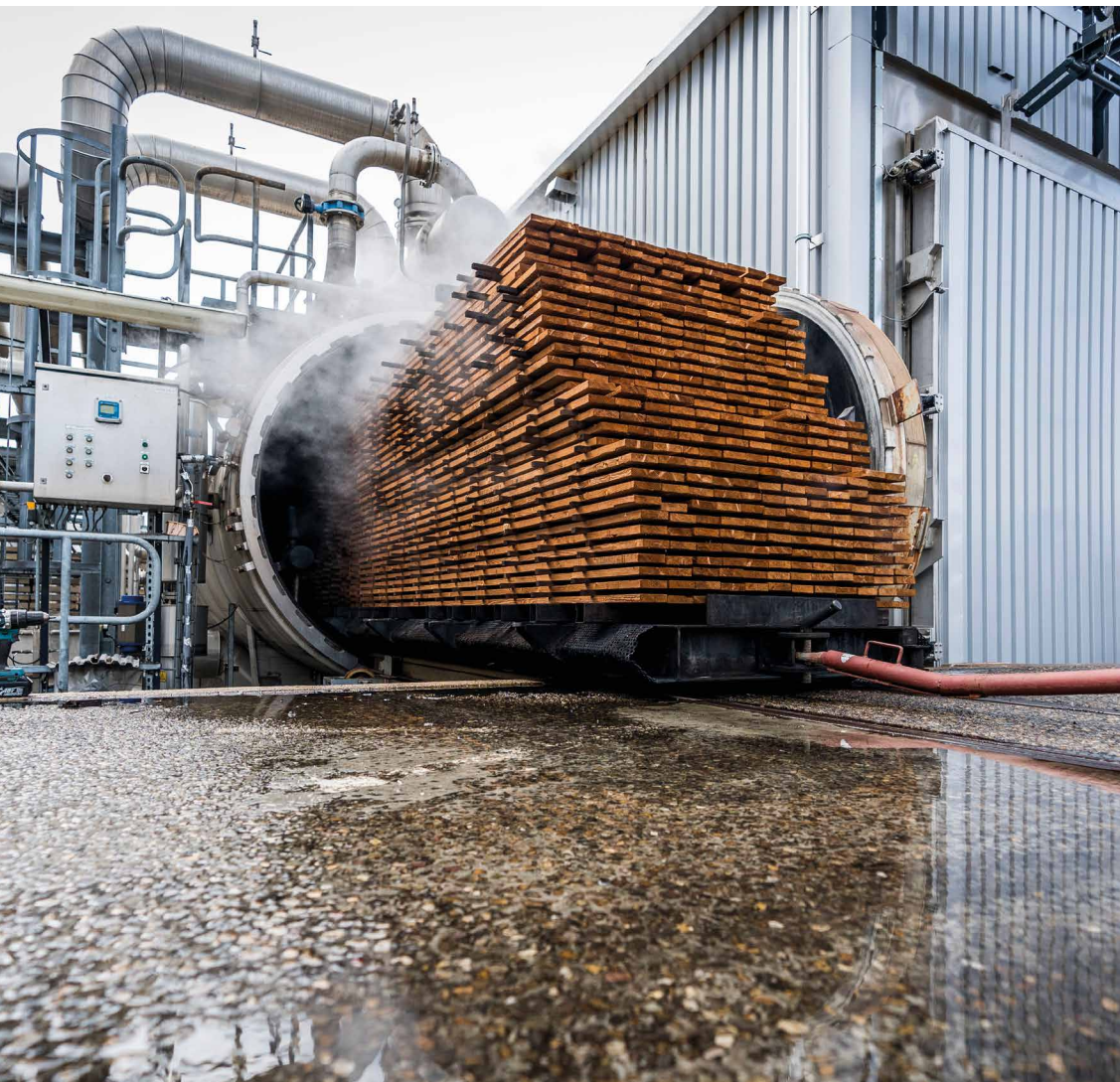


↑ Luxurious apartments, Hythe (UK)
Wedgewood Homes
Façade and ceiling cladding
Platowood Fraké
Treated with fire retardant

PLATONISING

Our process 'platonising' (hydrothermal modification) improves the qualities of wood. We do this in a completely environmentally-friendly way without chemical additives. After the process, the wood is extremely dimensionally stable and easily processable, making it suitable for the most innovative designs.

Platowood is the only company in the world that modifies wood in this sustainable way. The patented process takes place locally in our own factory in the Netherlands. In this way, we can guarantee the continuous quality of our wood products.



Steaming (hydrothermolysis)

The process

In simplistic terms, our process consists of three steps: steaming, drying, and curing. The additional process step in relation to thermal modification renders the wood less brittle and gives it the Platowood quality.



Molecular structure of untreated wood

Raw material

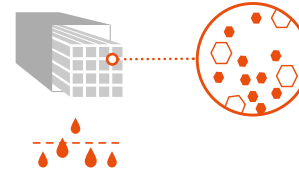
Fast-growing types of wood from sustainably managed, certified forests.



Step 1

Steaming (hydrothermolysis)

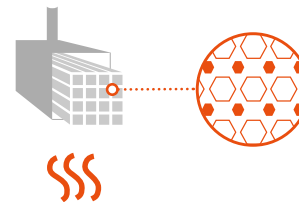
The wood is heated under elevated pressure in an autoclave by using steam. Naturally-present sugars – a culture medium for molds – are broken down.



Step 2

Drying

After the hydrothermal treatment, the wood contains a lot of moisture. In a drying kiln the wood is carefully and gradually dried.



Step 3

Curing

The wood is heated in the oven up to 180 °C in a dry environment. New stable bonds are formed inside the wood. Because of the relatively low temperature, the wood remains strong and resilient.



Result

Excellent, dimensionally stable, and aesthetic wood for every design.

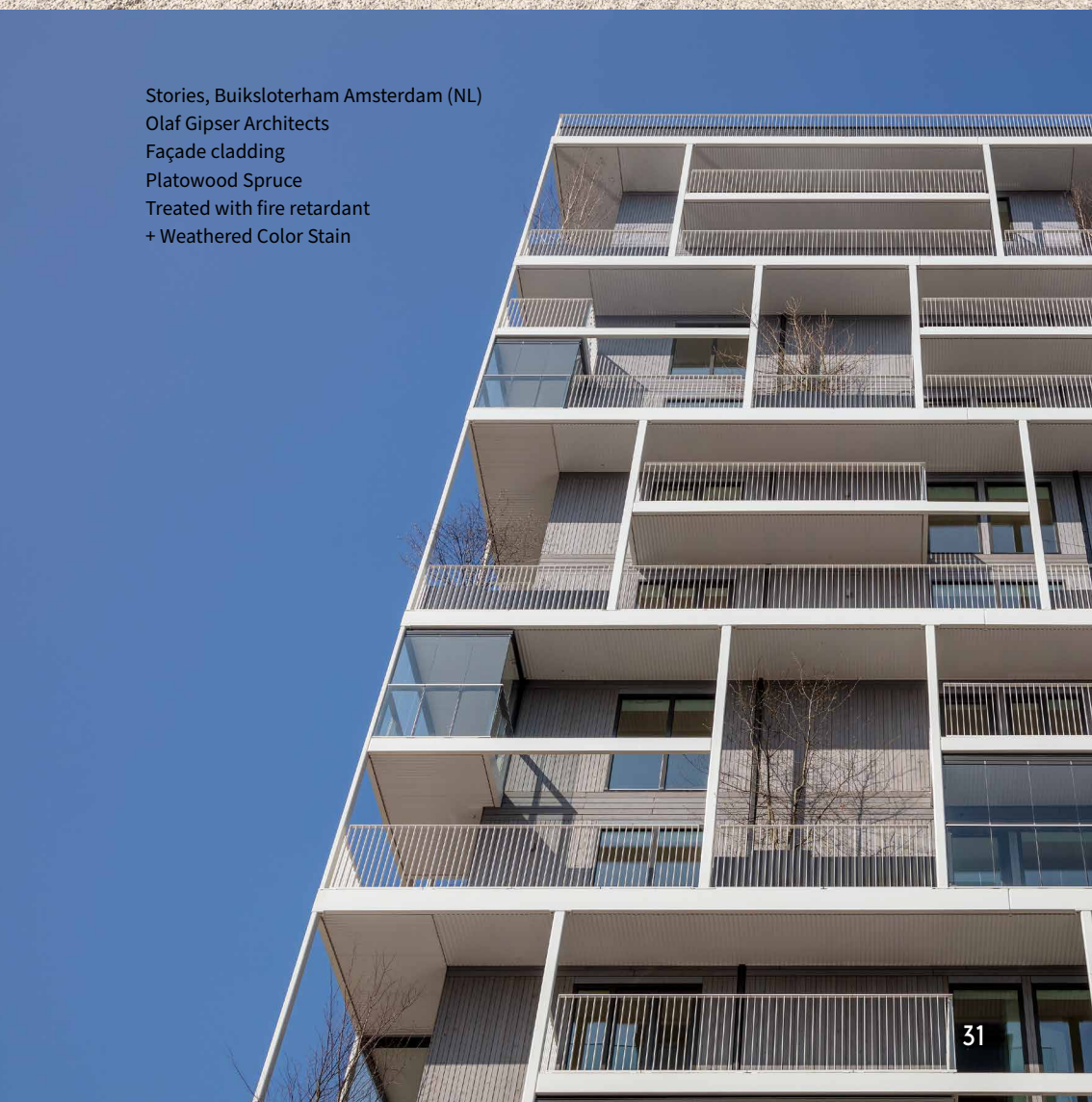
Villa K2, Eelderwolde (NL)
Francois Verhoeven Architecten
Façade cladding
Platowood Fraké rough



Breezand Beach houses, Vrouwenpolder (NL)
WTS Architecten
Façade cladding
Platowood Fraké



Stories, Buiksloterham Amsterdam (NL)
Olaf Gipsier Architects
Façade cladding
Platowood Spruce
Treated with fire retardant
+ Weathered Color Stain



Residential care home Bieduinen, Putte (NL)
Oomen Architecten
Façade cladding
Platowood Spruce

“The untreated wood relates to the surrounding nature and offers the inhabitants peace and tranquility, which was a key starting point.”

Architect Sander van Sambeek

De Bocht, Amsterdam (NL)
LEVS architecten
Façade cladding
Platowood Fraké
Treated with fire retardant



Boomerang bungalow, Noordwijk (NL)
Donald Osborne Architecture
Façade cladding
Platowood Fraké
Natural Color Oil

“The wood of Platowood is inviting, tangible, and friendly. I wanted to convey those properties to the exterior.”

Architect Donald Osborne

Ebbingehof, Groningen (NL)
Moriko Kira Architect
Façade cladding
Platowood Spruce
Treated with fire retardant



PROFILES



Platonium 01 Channelsiding

Dimensions (mm)	Effective dimension*	Fraké	Poplar	Spruce
18 x 66	55 + 4	✓	✓	✓
18 x 90	75 + 4	✓	✓	✓
18 x 115	101 + 4	✓	✓	✓
18 x 140	125 + 4	✓	✓	✓
18 x 185	170 + 4	✓	✗	✓



Platonium 04 Rebated feather edge board

Dimensions (mm)	Effective dimension*	Fraké	Poplar	Spruce
9/20 x 140	125 + 4	✓	✗	✓
9/20 x 185	170 + 5	✓	✗	✓
13/26 x 185	170 + 5	✓	✗	✓



Platonium 02 Channelsiding with false rebate

Dimensions (mm)	Effective dimension*	Fraké	Poplar	Spruce
18 x 90	75 + 4	✓	✓	✓
18 x 115	101 + 4	✓	✓	✓
18 x 140	125 + 4	✓	✓	✓
18 x 185	170 + 4	✓	✗	✓



Platonium 05 Planed on four sides

Dimensions (mm)	Fraké	Poplar	Spruce
18 x 40	✓	✗	✓
18 x 52	✓	✓	✓
18 x 66	✓	✓	✓
18 x 90	✓	✓	✓
18 x 115	✓	✓	✓
18 x 140	✓	✓	✓
18 x 185	✓	✗	✓
27 x 140	✓	✗	✓
40 x 140	✓	✗	✓



Platonium 03 Rebated shiplap board

Dimensions (mm)	Effective dimension*	Fraké	Poplar	Spruce
18 x 140	125 + 4	✓	✓	✓



Platonium 07 Rhombus

Dimensions (mm)	Fraké	Poplar	Spruce
18 x 66	✓	✓	✓
18 x 90	✓	✓	✓
18 x 115	✓	✓	✓
18 x 140	✓	✓	✓



Platonium 10 Castellated

Dimensions (mm)	Effective dimension*	Only in Fraké
27 x 140	129 + 4	✓



Platonium 16 Decking boards

Maten (mm)	Only in Fraké
27 x 140	✓



Platonium 11 Tongue and groove for hidden fastening

Dimensions (mm)	Effective dimension*	Fraké	Poplar	Spruce
20 x 90	70 + 4	✓	✓	✓
20 x 115	95 + 4	✓	✓	✓
20 x 140	120 + 4	✓	✓	✓
20 x 185	165 + 4	✓	✗	✓



Platonium 12 Tongue and groove for hidden fastening with false rebate

Dimensions (mm)	Effective dimension*	Fraké	Poplar	Spruce
20 x 90	70 + 4	✓	✓	✓
20 x 115	95 + 4	✓	✓	✓
20 x 140	120 + 4	✓	✓	✓
20 x 185	165 + 4	✓	✗	✓



Do you have another profile in mind?

Please contact us for the possibilities.

+31 88 60 500 60

info@platowood.com

* Effective dimension: the covering product size plus the clearance to be maintained when assembling.

VIEW MORE
PROJECTS AND
APPLICATIONS AT
PLATOWOOD.COM



Bunker Tower, Eindhoven (NL)
Powerhouse Company
Façade cladding
Platowood Poplar
Treated with fire retardant + Color



Platowood

Industrial Park Kleefse Waard
Westervoortsedijk 73
6827 AV Arnhem, The Netherlands
+31 88 60 500 60
info@platowood.com
platowood.com

Together! for a sustainable economy

Platowood is part of Industrial Park Kleefse Waard (IPKW), the most sustainable business park in the Netherlands. It is not just any place, but a community with a mission: growing and innovating together in essential themes such as circularity and the raw materials transition. Together, we can fulfil our sustainability ambitions.



Dimensionally stable



Easily processable



No finishing required



50-year lifespan



Without chemicals



**How can we help you
accomplish your project?**

+31 88 60 500 60
info@platowood.com
platowood.com

PLATOWOOD®